

ALMEMO® 710

**Data logger ALMEMO® 710
for both stationary and mobile applications
V7 - the latest generation
10 measuring inputs for all ALMEMO® sensors
Outstanding functions - thanks to digital D7
sensors.**



Data logger from our latest V7 generation

Data logger ALMEMO® 710 offers outstanding functions - thanks to our latest D7 sensors..

High-quality display - easy and convenient touchscreen operation

The brightly illuminated, generously dimensioned 5.7-inch color graphics display shows all measured values and functions clearly and precisely. The device is operated easily and conveniently via touchscreen. The menu guidance system, incorporating wizards and help windows, has a clear, straightforward structure.

Measured values, peak values, average values, and limit values can all be displayed in an easy-to-understand way in various forms, namely list, bar chart, or line graph (up to 4 lines).

Users can even configure their own customized user menus to display those parameters required by a particular application. Users can choose between German, English, and French.

One measuring instrument for every use

The measuring instrument is enclosed in a handy, compact housing with rubberized impact protection. This device can be used in a wide variety of ways, in mobile applications or as a desktop unit, on a folding stand or as a stationary unit in a wall-mounted housing.

It incorporates a powerful rechargeable lithium battery to ensure a long operating time.

Data logger for all storage applications

For the purpose of saving measured values the device incorporates an 8-MB flash memory. This can also be configured as a ring memory for monitoring tasks.

To save larger data quantities an external memory is available in the form of a plug-in SD card.

For autonomous long-term monitoring the data logger can also be run in energy-saving sleep mode.

Measuring inputs for 10 ALMEMO® sensors in all generations

Data logger ALMEMO® 710 incorporates 10 measuring inputs. All new and already existing sensors designed for any measurable variable can be connected and evaluated.

Sensors using analog signals pass via the integrated high-speed, high-resolution A/D converter.

Digital D6 and the latest digital D7 sensors transfer their measured values to the measuring instrument direct in digital form.

The measuring instrument supports all ALMEMO® plug connectors and sensor functions. Digital D6 / D7 sensors can be configured directly via the touchscreen.

New digital ALMEMO® D7 sensors

With these digital ALMEMO® D7 sensors the ALMEMO® system is enhanced by many new functions.

They operate via an all-digital interface to the ALMEMO® 710 measuring instrument ensuring high-speed serial transmission of all measured values.

The measuring ranges of ALMEMO® D7 plugs are independent of the measuring instrument and can be expanded as and when required for new applications.

Measured values can be displayed with up to 8 digits (depending on range) and the units with up to 6 characters. Sensor designation can be up to 20 characters.

Each connected D7 sensor has its own processor. These all work in parallel at their sensor-specific sampling rate. D7 sensors thus attain very high measuring speeds in dynamic measuring operations. Scanning times on the ALMEMO® 710 can be set individually for quick-acting and slow-acting sensors.

The ALMEMO® D7 plug can process up to 10 channels for measured values and function values. This includes new applications, especially for multi-value sensors (e.g. Meteo sensors) and for linking up to complex third-party devices (e.g. chemical analysers, power analysers).

Other equipment

With 3 ALMEMO® output sockets it is possible to connect simultaneously a PC / network, an ALMEMO® output interface with relays and analog output, and an SD memory card.

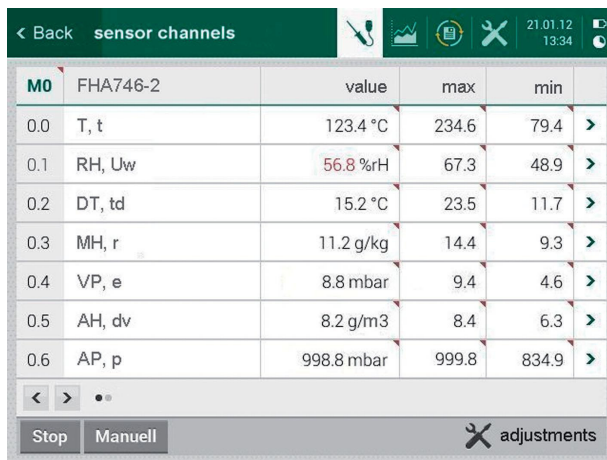
The ALMEMO® 710 incorporates an atmospheric pressure sensor to ensure automatic pressure compensation for measuring operations involving inter alia air flow or humidity variables.

With option KL it is possible - for analog sensors (e.g. temperature or pressure sensors) - to program multi-point adjustment or linearization in the ALMEMO® plug connector.

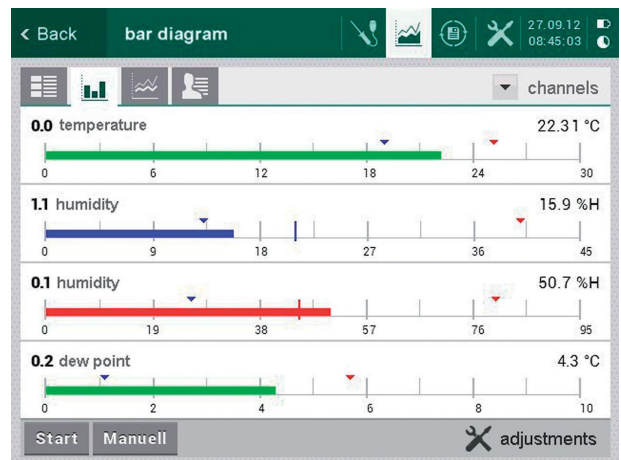


ALMEMO® 710

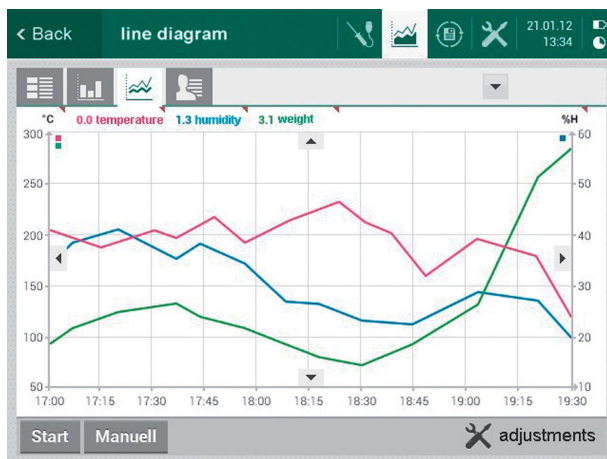
Clear, precise display - easy and convenient touchscreen operation



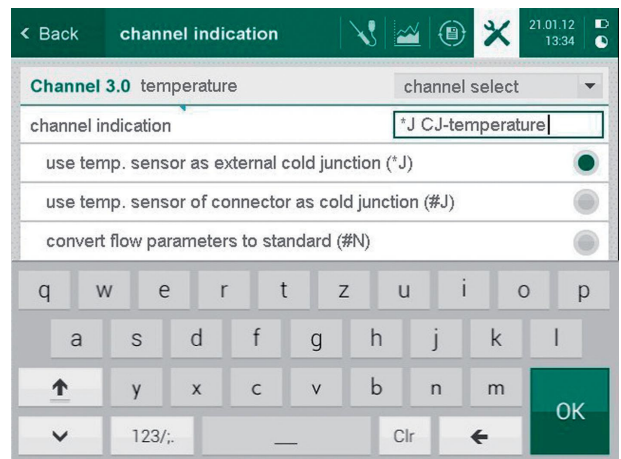
List of active measuring channels



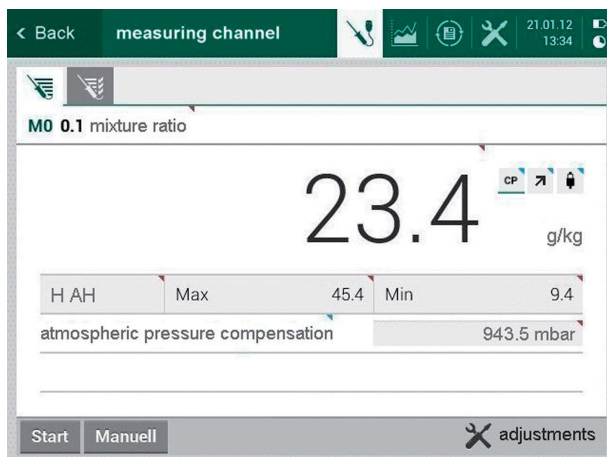
Display of measured values as a bar chart



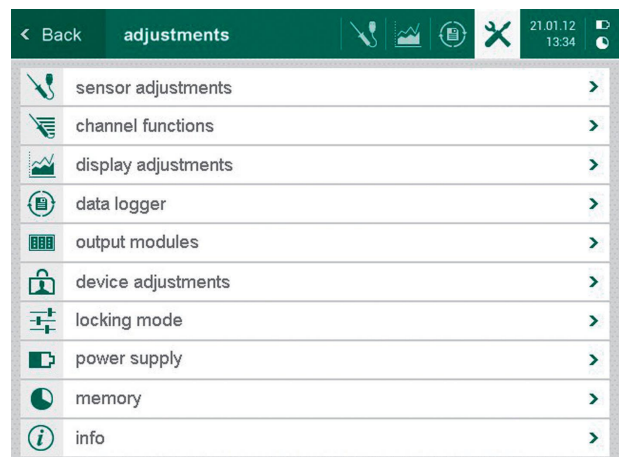
Display of measured values as a line graph



Keypad for programming purposes



Generously dimensioned display of measured values



Settings for all sensor and device parameters

03/2013 We reserve the right to make technical changes.

ALMEMO® 710

03/2013 We reserve the right to make technical changes.

Technical data:

Measuring inputs	10 ALMEMO® input sockets suitable for all generations of ALMEMO® sensors Analog sensors, D6 and D7 digital sensors
Electrical isolation	With semiconductor relays (50 V) for analog sensors
Channels	Up to 100 measuring channels per device
A/D converter	Delta-sigma, 24-bit, low power, 100 mops (s. Technical data, p. 01.05)
Sensor power supply	6 / 9 / 12 V, maximum 400 mA If supplied via mains adapter, 12 V, maximum 400 mA
Outputs	3 ALMEMO® sockets for all output modules (data / analog / trigger / relay cables, memory connector, etc.)
Standard equipment	
Display	Graphics display, 5.7-inch, TFT-LCD, VGA 640x480, illumination with white LED, dimmable
Keypad	Capacitive touchscreen and 3 additional touch keys
Memory	8 MB flash memory (400,000 up to 1.5 million meas. values)
Date and time-of-day	Real-time clock (4.7 ppm) with lithium buffer battery
Atm. pressure sensor	Integrated, measuring range 700 to 1100 mbar Technical data as for FDAD12SA (see page 11.23)
Mains adapter	
Rechargeable battery pack	2 rechargeable lithium batteries, total 13.8 Ah Integrated, high-speed charging (3 hours)
USB interface cable	ZA 1919 DKU electrically isolated
Mains adapter	ZA1312NA9 230 VAC to 12 VDC, 2.5 A, electrically isolated
Current consumption w.o.	active mode, approx. 300 to 500 mA, Sleep mode, approx. 0.05 mA
Input and output modules	
Housing	222 x 169 x 61 mm (WxDxH), 1200 grams, ABS / TPE, 2-component technology, with rubberized impact protection, with folding stand
ALMEMO 710	
ALMEMO 710 WG	with DIN rail fixture for wall-mounting
Other general data:	see ALMEMO® Technical Data, page 01.05

Accessories

Transport case, large, aluminum profile frame / ABS
Inside dimensions 48 x 35 x 6+6 cm (WxDxH) ZB2590TK2

Connecting cable, network technology

Memory connector with micro SD including USB card reader (see 04.03) ZA1904SD
Ethernet data cable, electrically isolated ZA1945DK
USB data cable with 5V device supply from PC not electrically isolated (Recommended option - electrically isolated measuring module OA710GT) ZA1919DKU5
Analog output cable -1.25 to +2.0 V ZA1601RK
Trigger and alarm cable (2 normally open, 0.5 A, 50 VDC) ZA1006EKG

Note on WinControl measuring software
As measuring software WinControl SW5700WCx is suitable (current version 7 and above). For version 6 or earlier WinControl update SW5700WCuX is required. For versions and description see Chapter 6.

Options

Possibility of programming multi-point adjustment or linearization for analog sensors OA710KL
Measuring rate for 1 measuring channel, 500 mops OA710Q5

Standard delivery

ata logger ALMEMO® 710, USB data cable ZA 1919 DKU, Mains unit 12 V / 2.5 A ZA 1312 NA9, Manufacturer's test certificate

Mobile device in housing with folding stand, in transport case ZB9710TK **Order no. MA710**

Stationary device in housing with wall-mounting **Order no. MA710WG**

