



BAS001 Omnidirectional Source

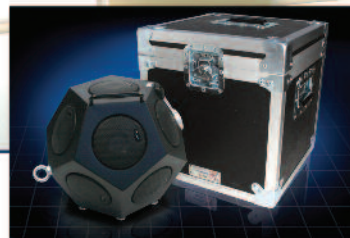
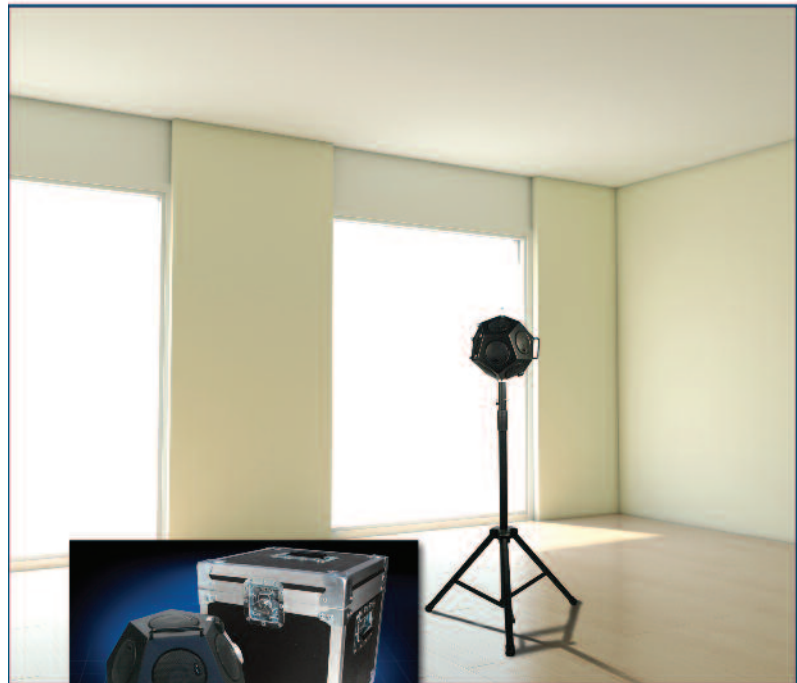
Omnidirectional (Dodecahedral) Sound Source for Reverberation Time, Room Acoustic and Building Acoustic Measurements

Highlights

- Used for ISO 140-4, ISO 3382, DIN55210, ASTM E90, E336, E2235 compliant measurements
- High sound power level output
- Acoustically Isotropic Source
- Available lightweight & compact amplifier (BAS002E/U)

Applications

- Architectural Acoustics: In-situ Reverberation Time Measurement
- Building Acoustic Measurements
- Sound Insulation
- Evaluation of the Acoustic Indexes for the Transmission Loss of Horizontal or Vertical Partitions
- Sweep Response Technique



BAS001 on Tripod



Model BAS001

The BAS001 Source is designed to generate omni-directional sound fields for making standard compliant measurements including: architectural acoustics (ISO 3382), building acoustics (insertion loss, acoustic absorption area, etc: ISO 140-4, DIN 55210). The BAS001 is typically used to saturate a room with a uniform acoustic field. The available high-efficiency power amplifier has no fan for cooling, allowing measurements in quiet environments, like those in reverberation time applications.



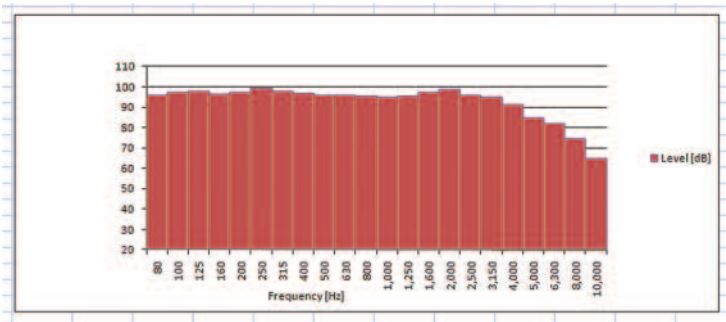
Dodecahedral loudspeaker

Acoustic

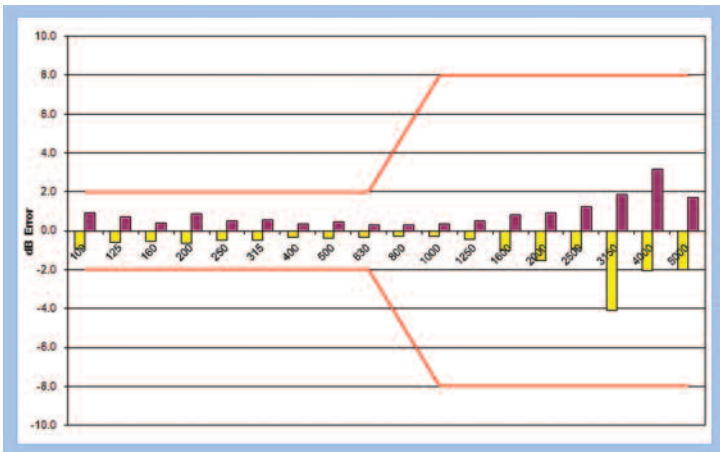
Sound Power	118 dB re 1 pW	not equalized
Sound Power	112 dB re 1 pW	100 - 5kHz equalized
Frequency	80 to 12.5k Hz	operating range
THD	0.1 %	
Amplitude Linearity	±2 dB from 100 to 4kHz	
Directivity	±2 dB from 100 to 4kHz	

Physical

Dimensions	Ø 300 mm max	Ø 11.8 in max
Weight	9 kg	20 lb



Equalized Output Power (dB)



Min/Max Directivity Errors as a function of frequency (dB)

Compliance

Acoustic

- ISO 140-4: 1998 (dodecahedral source)
- ISO 3382-1: 2006, ISO 3382-2: 2008
- DIN 55210
- ASTM E2235, E966, E1332

Electrical, EMC & Safety

- 2002/95, 2002/96, and 2003/108/EC Directive
- 2004/108/EC Directive
- 2002/96/EC WEEE (RAEE) Electronic waste disposal
- 2002/95/EC ROHS

Order Information

Standard Accessories

- Flight case for the omni-directional source
- Technical Manual & User Guide
- Signal cable (speak-on – speak-on) for dodecahedral loudspeaker

Optional Accessories

- **TRP021** Tripod for loudspeaker
- **BAS002E/U** Lightweight Power Amplifier



LARSON DAVIS
A PCB PIEZOTRONICS DIV.

3425 Walden Avenue, Depew, NY 14043-2495 USA

Phone 716-926-8243

Toll-Free in USA 888-258-3222 Fax 716-926-8215

E-mail sales@larsondavis.com Web Site www.larsondavis.com

ISO 9001 CERTIFIED

© 2011 PCB Group, Inc. In the interest of constant product improvement, specifications are subject to change without notice. PCB, and ICP are registered trademarks of PCB Group Inc., SoundTrack LXT, Spark and Blaze are registered trademarks of PCB Piezotronics, Inc. HV Manager is a trademark of PCB Piezotronics, Inc. All other trademarks are properties of their respective owners.

LD-BAS001-0611

Printed in U.S.A.

For environmental noise monitoring and building acoustics, **Larson Davis** offers a full line of instruments, accessories and software. For personal noise and vibration exposure monitoring, Larson Davis complements this with sound level meters, personal noise dosimeters, human vibration meters, audiometric calibration systems and hearing conservation programs.

Visit www.larsondavis.com to locate your nearest sales office