



OPTICAM

Full Size Reel
Self-Leveling Camera Head

QUOTE

QUOTATION FOR		
Qty.	Product	Price
Total		

Customer Contact	
Name	
Address	
City St Zip	
Phone	

Sales Contact

PRODUCT OVERVIEW

The Opticam system has a user-friendly keypad and easy "One Touch" recording and snapshot buttons to help speed up inspection time. Technicians can easily record vital inspection data and client information using the available on-screen text-writer and footage counter. Built with a 1.3" self-leveling camera head that is geared to inspect sewer pipes from 2" straight up to 12" inch diameter (with optional 6"-8" centering skid) and a built-in sonde which broadcasts a 512 Hz frequency which is locatable with a 512 Hz locator.



FEATURES AND BENEFITS

Wi-Fi Streaming to Apple or Android

View, record, snapshot and share inspection videos.



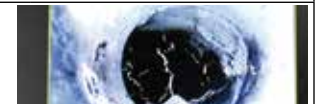
One Touch Recording to USB

Record and take pictures during inspection.



On-Screen Footage Counter

View the distance pushed and displayed on screen.



Built-in Microphone and Speaker

Record voiceover video and play it back.



Keypad and On-Screen Text Enabled

Type in vital information to display and record on video.



Built-in Always on 512Hz Sonde

Broadcast a 512Hz signal to be locatable with a locator.



ACCESSORIES INCLUDED WITH THE SYSTEM



Debris Cover 2" & 3" Skids USB Stick Accessory Bag DC Power Cord AC Power Cord S-Tool

OPTIONAL ADD ONS



External Battery

Locator

6" to 8" Centering Skid

128 GB Internal Memory



OPTICAM

Full Size Reel
Self-Leveling Camera Head



WiFi Video Streaming App

Now you can stream wireless video of your inspection on your Android or IOS device up to 100 feet away from the Opticam system. Record video, take snapshots, playback and email your inspections to your customers via the Insight Vision App available on Google Play and Apple stores.



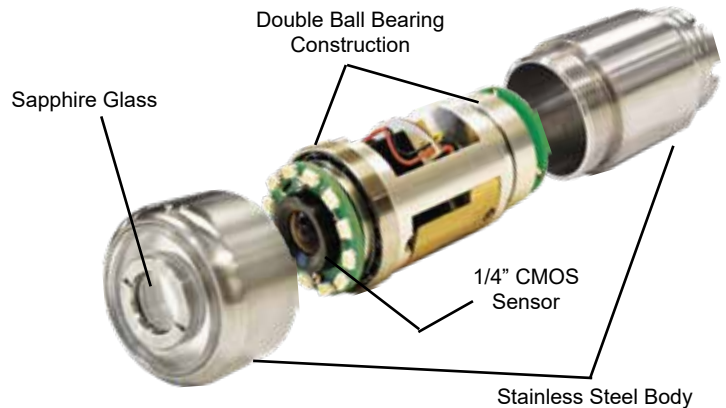
COMMAND MODULE

Case Dimensions	14 1/2" W x 5" H x 11 1/4" D
Data Storage	8GB USB Drive
Keyboard	Full "Qwerty" Style Membrane
Distance Counter	On Screen In Feet or Meters
Video Picture Format	H.264, JPEG
Controls	One Touch Recording Snapshot
Weight	8.0 Lbs
LCD Size	10.4"
Power Source	12V 5 Amp DC, AC, and Optional Battery



CAMERA HEAD

Dimensions	2" L x 1.3" Diameter
Self-Leveling	Yes
Camera Resolution	640 x 480 (420 TV Lines)
Weight	5.9 Ounces
Image Sensor	1/4" CMOS
Imager Sensitivity	0.025 Lux
Camera Body	Stainless Steel
Camera Lens	Sapphire Glass
Light Ring	12 Dimmable Super Bright LED's
LED Window	Polycarbonate



FULL SIZE REEL

Cable Length	200 - 300 - 400 Ft Lengths
Cable Exterior	Polypropylene Jacket
Cable Core	0.177" Fiberglass Rod
Push Rod Diameter	0.475" OD
Dimensions	30" L x 16 1/2" W x 32 1/2" H
Weight	62 Lbs (200Ft)
Sonde Frequency	512 Hz
Protective Skids	2" & 3" *Included With System

