

MX 500

3.9mm 360 Articulations



Applications



AVIATION



POWER GEN



PETROCHEMICAL



OIL & GAS

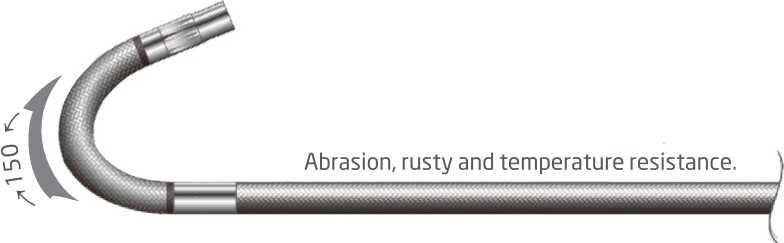


AUTO



QUALITY

- Intuitive touch screen operation.
- 3.9mm small tube fulfills critical and quality inspection.
- 150° bending angle, more inspection areas.
- Full outer braided stainless steel tube provides superior durability abrasion, rusty and temperature resistance.



Normal touch screen / Full lamination touch screen

Can be operated under direct sunshine



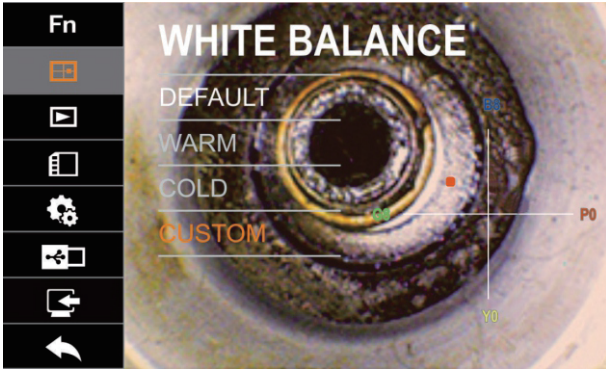
IP 55



Adjustable

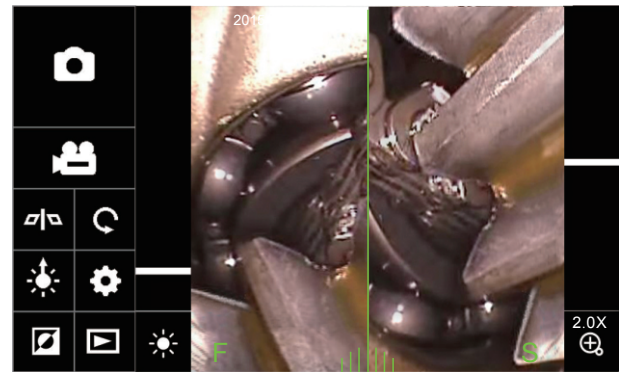
White Balance

Adjust white balance via operation interface.



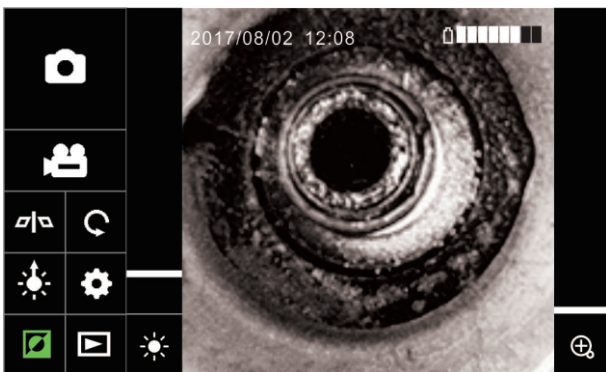
Dual View

To see front view and side view simultaneously (designated lens is need).



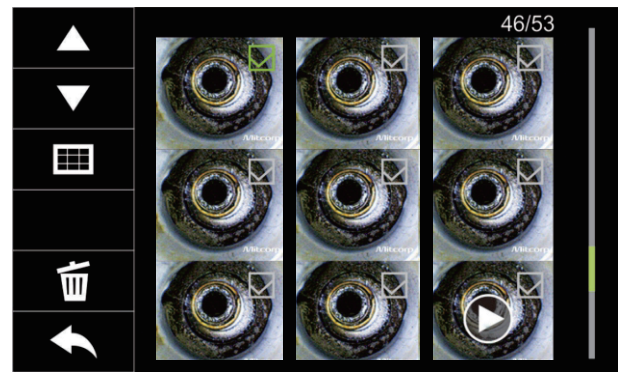
Negative+

Contrast enhancement to stand out cracks and details.



Calbum play

To view certain file, check and click; to delete files, check and put them in the trash can.



ACCESSORIES

Also include: Usb cable, AV cable, clean set, SD card, user manual.



Mx500 main system	
Dimensions	160mm x 120mm x 55mm
Weight	750g
Display	5" TFT LCD (VGA), resolution
Power	Rechargeable Li battery Power consumption DC 5V 3A
Waterproof	Can be operated in rain
Video out	NTSC & PAL / AV OUT
Audio input	Built-in microphone
Storage	SD card(SDHC), up to 32G
Video / Photo file format	.avi / .jpg, 640 x 480
Working temperature	0°C~60°C
Storage temperature	0°C~60°C
LED indicator	Green LED : Power On Red LED : Charging System

3.9mm 360 Articulation Probe	
Probe head diameter	3.9mm
Probe head length	13mm
Probe length	1.5m, 3m
Weight	1.5m- g ; 3m- g
Articulation angle	4 ways > 150°
Probe head material	Stainless steel
Probe material	Outer braided stainless steel
Light source	Front / Side
FOV	90°
DOF	10mm~100mm
Botton	Snap shot, brightness +, brightness -
Switch lever	left-open, right-lock
Working temperature	- 10°C~60°C
Storage temperature	- 10°C~60°C
Resolution	400x400

* The maximum articulation angle may degrade due to the bending loops of tube.