

# Mitcorp

## INDUSTRIAL VIDEOSCOPE

■ CLEARNESS ■ SHARPNESS ■ BRIGHTNESS



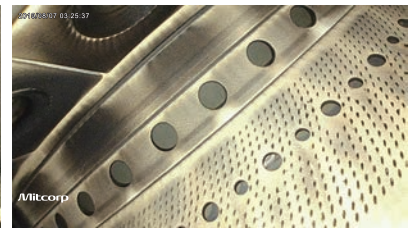
## X2000 HD VIDEOSCOPE

## Excellent Image Quality

- Super resolution image. (Still image 2560\*1440; Video 1920\*1080)



● Super resolution image ●



## Best image view experience



Wide view angle 7" IPS TFT-LCD



Manual exposure by fingertip



## Excellent humanize user interface



Front /side Dual view at once (with mirror)



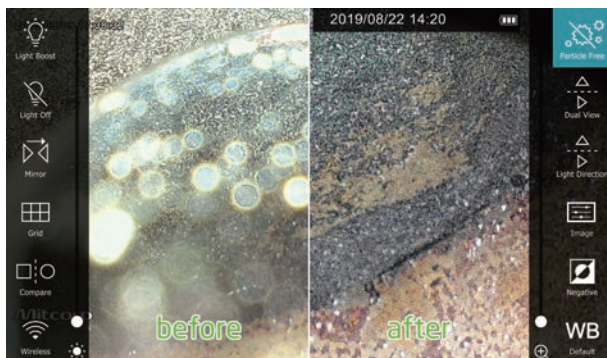
Support image sharpness fine tune



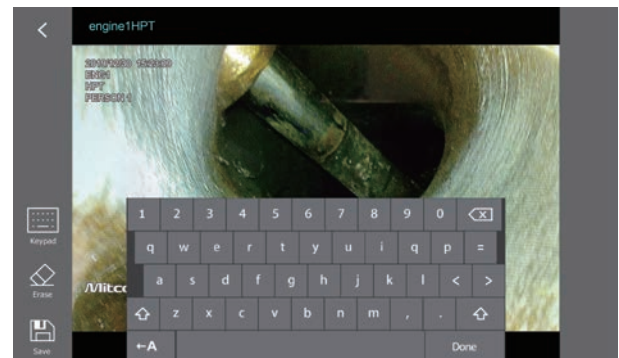
3 modes white balance



100°C resistance warning & auto shut down protection

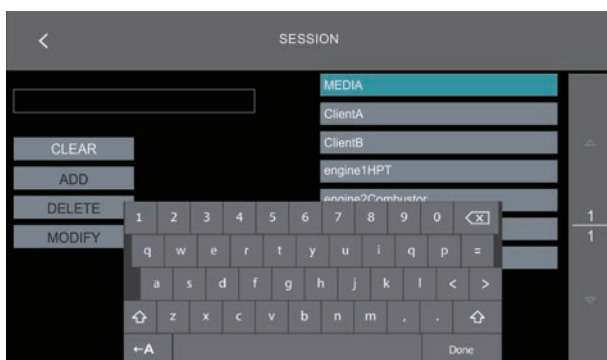


Patented particle free effect (with mirror)



Editable image annotation

## Advanced file management



Custom build file folder by 'SESSION'

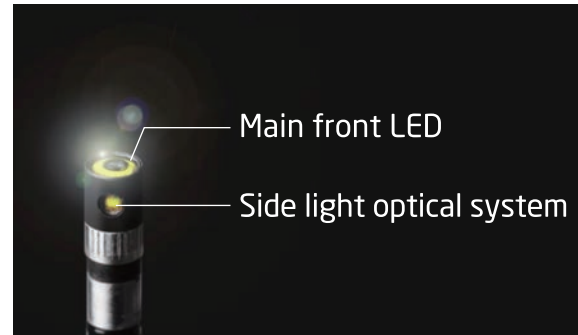


Custom photo overlay text by 'TAG'

## Tungsten articulation probe



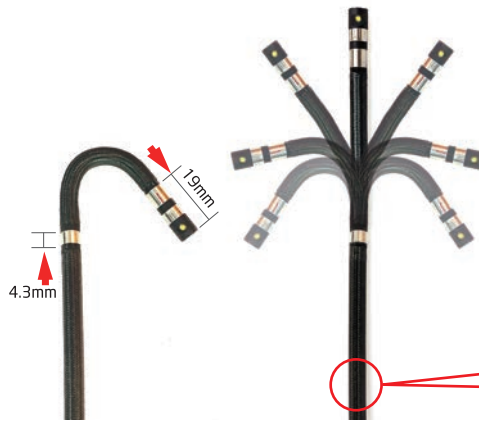
Smooth mechanic articulation control system  
Move & lock joystick



- 100°C resistance camera tip (6.0mm tube)
- Ultra-luminance front LED
- Patented side-luminance optical system



High rigidity tube (35cm)



Shorter distal end & bending radius



Scratch resistance  
tungsten braids

## Connectivity

- HDMI port to TV/monitor for HD quality image viewing
- USB type C port to PC as Web-Cam or SD card reader
- Wi-Fi connect to mobile devices to view and share pictures





## Ruggedized Storage



Built-in storage reel for tube



IP67 trolley case with extendable handle

## Accessories



Rigid sleeve



For 6mm tube.  
Max 4 extensions

For 3.9mm tube.  
Max 3 extensions



Rigid sleeve



6.0mm / 3.9mm  
dual view mirror



6.0mm / 3.9mm  
side view mirror



6.0mm / 3.9mm  
pin



Insulation cap



TYPE-C



HDMI



Shoulder strap



Hand strap



Power adaptor



USB charging cable




Sun visor



Trolley case

\* Also include: clean set, SD card, user manual

# Specifications

X2000				
<div><div></div><div>* High temperature during charging/ operation may cause battery degradation of performance and life.</div></div>				
Display		7" LCD, Resolution 1024x600	Weight	1480g (w/stand)
Power Supply	AC adapter	100V~240V, 12V 2.5A. 50-60Hz		
	BATTERY	Rechargeable Li Battery 3.6V 9800 mAh, approximately operation time: 5hrs, charging time: 4hrs.		
Video Output	HDMI	TYPE D; HDMI 1.4 transmitter with 3D format and CEC support		
	USB	USB TYPE C, supporting USB full-speed and high-speed data transmission		
	Wi-Fi	IEEE802.11B/G		
Operating temperature(*)		In air 0~40°C, with AC power adapter: 0~40°C, charging temp: 0~35°C		
Storage temperature		10°C~60°C		
Drop resistance		1m		
Relative humidity		Max 95% non-condensing		
Dust and water proof		IP 57		
Insert Tubes interchangeability		6.0mm HD series; 3.9mm series		
Software features		Recording management		
Image features	Digital zoom 3X, 10 steps brightness control	Storage media		SDHC up to 32G
Image effect	Clarity-on/off	Overlay		YY/MM/DD h:m, battery capacity
Annotation	10 text annotation (24 characters)	Thumbnail image display		9 grids album mode
Timestamp / watermark	For snapshot / video recording (on / off)	Still image	Resolution	2560x1440 (S-HD); 1280x720 (HD)
Image management	User define pic / video folder available		Recording format	.jpg
White balance	Light boost, light off, mirror, grid, compare, wireless, particle free, dual view, light direction, negative, auto white balance	Video	Resolution	1920x1080
			Recording format	.mov / H.264
		Audio input	Built-in microphone (on/off)	
		Frame Rate		30FPS

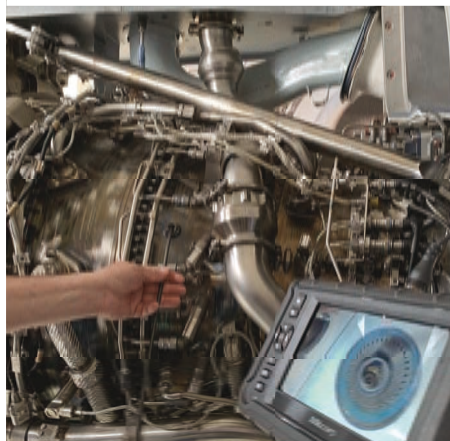
## MIL-STD compliance

Item	Standard (Method)
Vibration Test (Packaged)	MIL-STD-810G-CHG-1 Method 514.7 Procedures I
Transit Drop Test (Packaged)	MIL-STD-810G-CHG-1 Method 516.7 Procedures IV
Salt Fog Test	MIL-STD-810G-CHG-1 Method 509.6
Humidity Test	MIL-STD-810G-CHG-1 Method 507.6 Procedures II
Explosive Atmosphere	MIL-STD-810G-CHG-1 Method 511.6 Procedures I

Accessories		
HDMI cable (AV-out)	1.8m, HDMI 1.4a, D TYPE	
USB cable (data transfer)	1m, type C to standard type A	
USB charging cable	1m, USB-DC jack (for power bank) it is recommended to use 5V~12V, 2A output mobile power bank. Under 2A output will be just operation power supply, no charging to battery.	
SD card	16G	
DC power adapter	100V~240V, 12V 2.5A 50~60 Hz	
Side-view mirror	6.0mm / 3.9mm	
Shoulder strap	Polyester	
Hand strap	Polyester	
Sun visor	Steel / Plastic	
Dual-view mirror	6.0mm / 3.9mm	
Insulation cap	Ø20mm, 90mm rubber	
Rigid sleeve	for 6.0mm probe:	for 3.9mm probe:
	OD: 8mm / ID: 7mm Protection ring: OD: 10mm / extension joint ring: OD:11.2mm	OD: 6mm / ID: 5mm Protection ring: OD: 8mm / extension joint ring: OD:10mm
	Grip material: Rubber / Aluminum / Plastic; Tube material: Stainless steel	
Trolley case	HDPE EVA with storage reel	

360° Articulation Probe				
<div></div>				
Options	60HD	60HDLF	39TU	39TUSI
Product	<div><div>Front view Dual light sources</div><div><div>w/side view mirror    w/dual view mirror</div></div></div>		<div><div>Front view Dual light sources</div><div><div>w/side view mirror    w/dual view mirror</div></div></div>	<div>Side View (Short focus)</div> 
Probe head diameter	6.0mm	6.0mm	3.9mm	3.9mm
Probe head length	19.3mm	19.3mm	13mm	13.9 mm
Direction of View	Front view	Front view	Front view	Side view
Illumination	Front / Side LEDs			Side LEDs
Field of View (FOV)	90°			87°
Depth of Field (DOF)	10mm~100mm	25mm ~∞	10mm~60mm	2mm~30mm
Still image resolution (.jpg)	2560x1440 (S-HD) 1280x720 (HD)	2560x1440 (S-HD) 1280x720 (HD)	800x800 400x400	800x800 400x400
Video resolution (.mov)	1920*1080	1920*1080	400x400	400x400
Probe length	2m / 3m / 5m / 7m		1.5m / 3m	
Articulation angle	2m, 3m full ways ≥120°; 5m, 7m full ways ≥80°		Full ways ≥140°	
Operating temperature	In air: -10~100°C; In water: 10~30°C		In air: -10~60°C; In water: 10~30°C	
Storage temperature	0~60°C			
Probe head material	Stainless Steel			
Probe material	Tungsten braid			
Joystick console Dimensions	(W x D x H) 139.4x193x84.2mm (w/o SR and insert tubes)			
Joystick console buttons	Brightness +, Brightness -, snapshot / record			
Lock and move	Lock / unlock switch on console			
Dust and water proof	Joystick console: IP 54; Insert Tube: under water 1m for 30 minutes			
Relative humidity	Max 95% non-condensing			
Liquid resistance	Operable when exposed to machine oil, light oil or 5% saline solution			

- The maximum articulation angle may degrade over time



website: [www.mitcorp.com.tw](http://www.mitcorp.com.tw)

✉ e-mail: [sal@mitcorp.com.tw](mailto:sal@mitcorp.com.tw)

2F., No.75, Wenhua 1st Rd., Guishan, Taoyuan 333, Taiwan  
T+886-3-328-7177 F+886-3-328-7176

© 2020 Medical Intubation Technology Corporation (Mitcorp).  
All rights reserved. Design and specifications are subject to change without prior notice.  
Actual product and accessories may differ from illustrations. Errors and omissions excepted.  
Reproduction in any manner without written permission of Mitcorp is strictly forbidden.



Mitcorp



Mitcorpglobal



Mitcorpglobal

